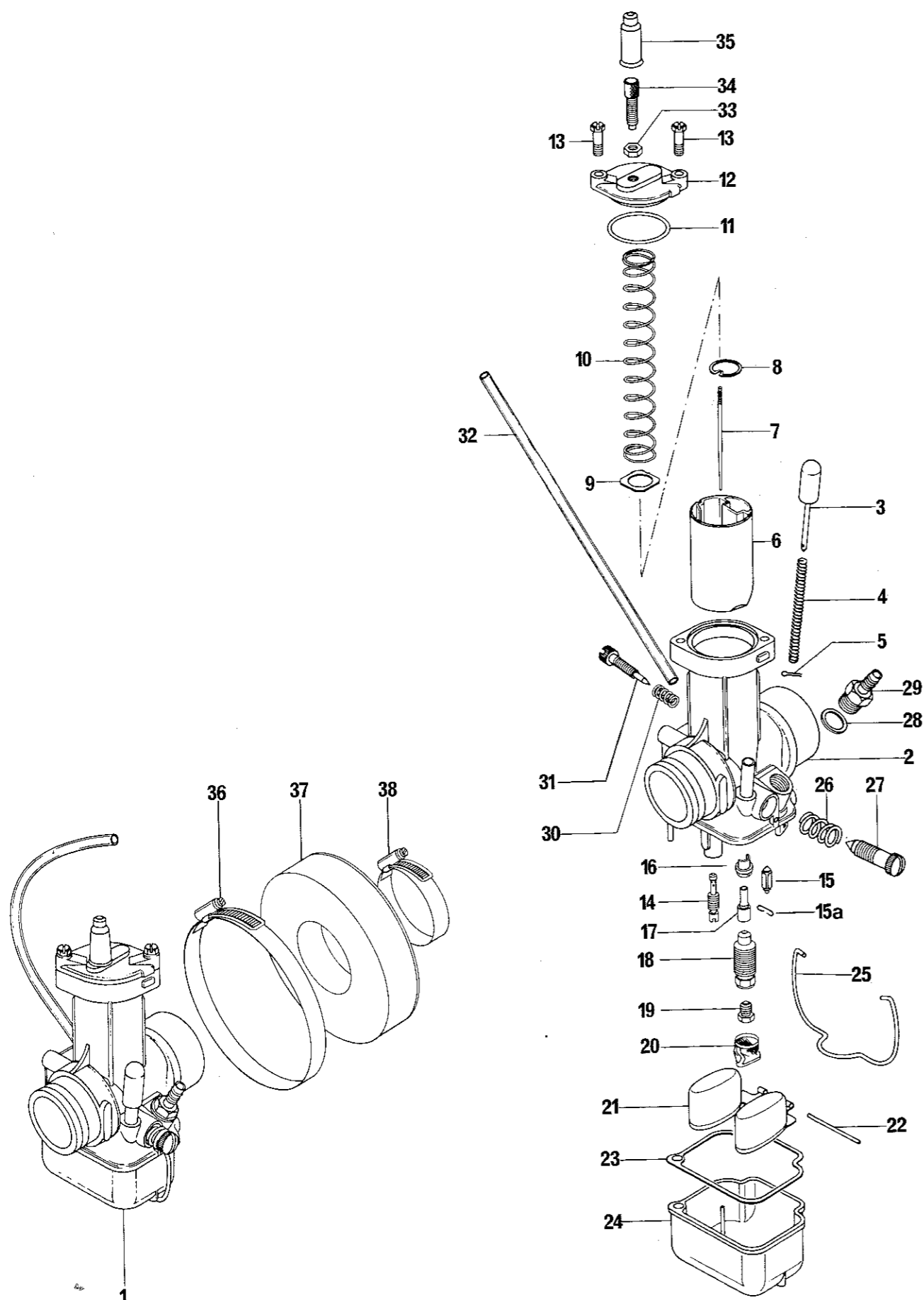


CARBURETOR



ITEM NO	PART NUMBER	DESCRIPTION	MX-1 125	MX-1 175	Flat Rate Time
1	420 291 440	Bing Double Float Carburetor 1/32/102	1	1	0.3
	420 291 441	Bing Double Float Carburetor 1/32/104	-	1	0.3
2	420 261 590	Carburetor Housing Ass'y	1	1	0.5
3	420 963 090	Carburetor Primer	1	1	0.5
4	420 938 100	Spring, Primer	1	1	0.5
5	420 245 240	Cotter Pin, Primer	1	1	-
6	420 261 631	Carburetor Piston (# 1 Chrome)	1	1	0.2
7	420 261 640	Jet Needle (1 Ring Identification)	optional		D.N.A.
	420 261 641	Jet Needle (4 Ring Identification)	1	1	0.2
8	420 261 650	Needle Clip	1	1	-
9	420 227 630	Washer	1	1	-
10	420 239 700	Spring, Carburetor Piston	1	1	0.2
11	420 261 670	O'Ring	1	1	-
12	420 261 660	Top Cover Plate	1	1	0.2
13	420 241 430	Hex. Screw M5 X 12	2	2	-
14	420 963 142	Idler Jet 40	1	1	0.5
	420 963 141	Idler Jet 30	optional		D.N.A.
15	420 261 700	Float Needle	1	1	0.5
15a	420 261 710	Clip, Float Needle	1	1	-
16	420 261 690	Diffuser	optional		D.N.A.
	420 261 692	Diffuser	1	1	0.5
17	420 261 600	Needle Jet 2.76	optional		D.N.A.
	420 261 605	Needle Jet 2.73	optional		D.N.A.
	420 261 608	Needle Jet 2.70	1	1	0.5
18	420 963 130	Mixing Tube	1	1	0.5
19	420 268 983	Main Jet 150	1	-	0.5
	420 268 984	Main Jet 155	-	1	0.5
	420 268 979	Main Jet 130	optional		D.N.A.
	420 268 980	Main Jet 135	optional		D.N.A.
	420 268 981	Main Jet 140	optional		D.N.A.
	420 268 982	Main Jet 145	optional		D.N.A.
	420 268 985	Main Jet 160	optional		D.N.A.
	420 268 986	Main Jet 165	optional		D.N.A.
	420 268 987	Main Jet 170	optional		D.N.A.
	420 268 988	Main Jet 175	optional		D.N.A.
	420 268 989	Main Jet 180	optional		D.N.A.
20	420 261 620	Sieve Sleeve	1	1	0.5
21	420 963 190	Float	1	1	0.5
22	420 929 700	Pin (Float)	1	1	0.5
23	420 830 720	Gasket, Float Chamber	1	1	0.5
24	420 261 610	Float Chamber	1	1	0.5
25	420 963 180	Spring Clip (Float Chamber)	1	1	0.2
26	420 938 640	Spring Idle, Adjustment Screw	1	1	-
27	420 963 160	Idle Adjustment Screw	1	1	0.1
28	420 930 565	Sealing Ring	1	1	0.1
29	420 241 940	Nipple	1	1	0.1
30	420 939 880	Spring, Air Regulating Screw	1	1	-
31	420 963 150	Air Regulating Screw	1	1	0.1
32	420 256 034	Vent Line 280 mm	1	1	0.1
33	420 942 540	Hex. Nut M6 X 0.75	1	1	-
34	420 241 440	Adjustment Screw M6 X 0.75	1	1	-
35	420 260 370	Rubber Grommet	1	1	-
36	740 002 004	Hose Clamp (Air Box)	1	1	-
37	740 003 000	Carburetor Booth	1	1	-
38	740 002 003	Hose Clamp (Carburetor)	1	1	-