

MOTOR CYCLE LIGHTWEIGHT 250 CC CAN-AM 250

GENERAL INSTRUCTION NO 1

Sponsor:  
 DGE ME (A)

Publications Authority:  
 Vehicles & Weapons Branch REME  
 Project No: 70812 (124)  
 File ref: VB/55706/41

AMENDMENT RECORD

Amdt	Incorporated by	Date	Amdt	Incorporated by	Date
1			4		
2			5		
3			6		

SUBJECT: Jack stand  
 (Approval No TSS/4634)

INTRODUCTION

1 This instruction refers to the local manufacture of a jack stand to be used by workshops on the subject vehicles as listed in para 2. The stand facilitates removal of the rear wheel and repair work requiring the rear wheel off the ground by one person without assistance.

APPLICABILITY

2 Motor Cycle, Lightweight, 250 CC CAN-AM MK 2 of the following VAC:  
 1010-4100 and 1010-9100.

ESTIMATED TIME REQUIRED

3. Manufacturing: 8 man-hours

IMPLEMENTATION

4 Stores, tools and equipment

4.1 Stores or suitable equivalent to be obtained locally

<u>Item No</u>	<u>COSA Section</u>	<u>NSN/Part No</u>	<u>Designation</u>	<u>Qty per eqpt</u>
1	G2	4710-99-965-0502	Steel tube 25 mm o.d. x 3.2 mm wall thickness	As reqd
2	G2	9515-99-964-7895	Steel strip 25 mm x 5 mm thk	As reqd

<u>Item No</u>	<u>COSA Section</u>	<u>NSN/Part No</u>	<u>Designation</u>	<u>Qty</u>
4.2	<u>Tool to be manufactured</u>			
3	-	V6410/1	Stand, jack	1

Sequence of operations

Note ...

The item numbers of para 4 are used as reference throughout this instruction.

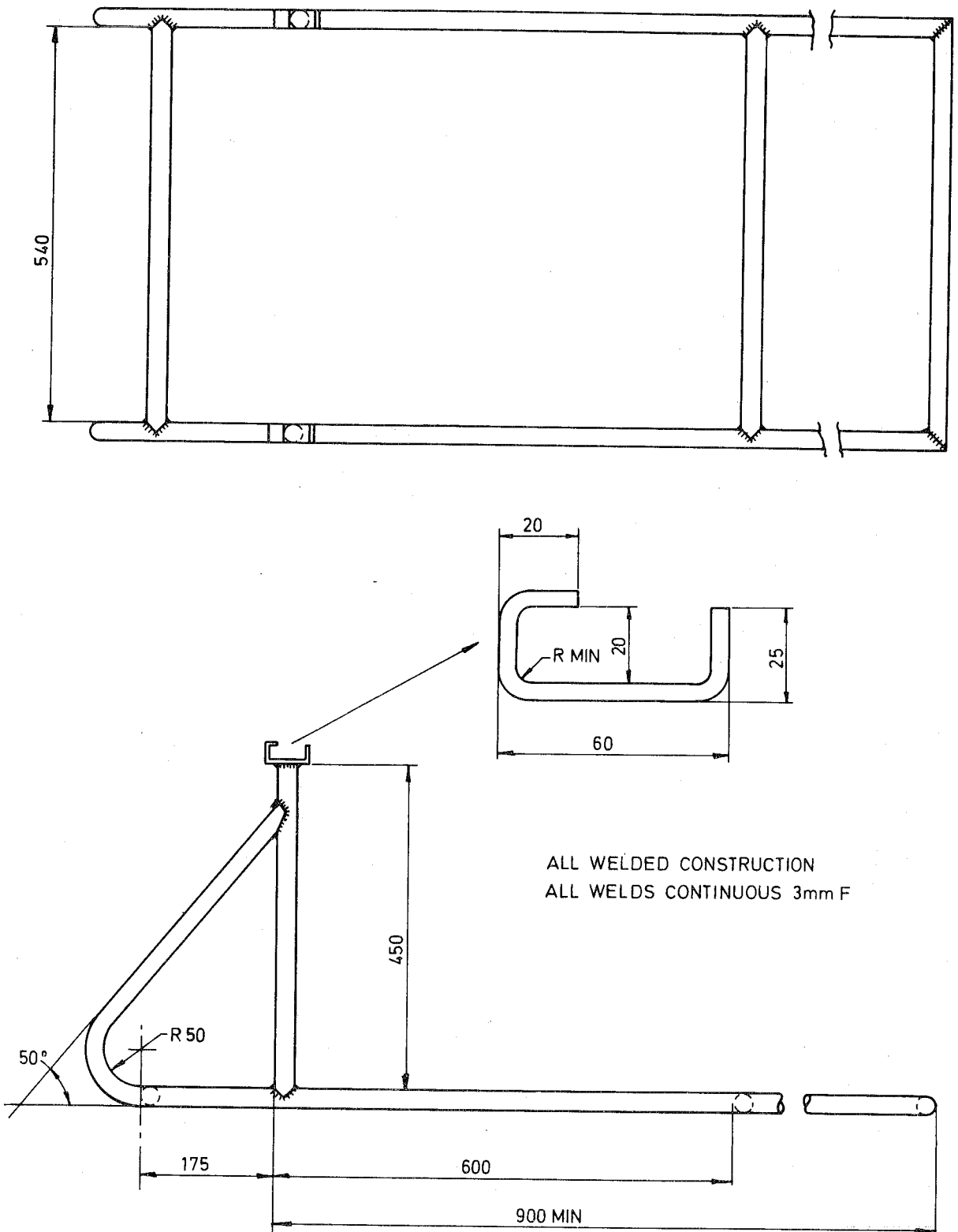
5

5.1 Manufacture stand (item 3) to detail shown in Fig 1 using steel tube (item 1) and steel strip (item 2).

Method of operation

6

6.1 With cycle on centre stand locate lugs of jack stand on to pannier frame, pivot on radiused section, and pull down.



Matl. STEEL TUBE 25od x 3.2 wall  
BS1775 CDS24 G2/4710-99-965-0502  
STEEL STRIP 25x 5  
BS 4360 Gde 43A G2 9515-99-964-7895

V6420/1

Fig 1 - Can-AM MK 2 jack stand  
(Dimensions in mm)