

FOR OFFICIAL USE ONLY
CROWN COPYRIGHT RESERVED



MOTOR CYCLE LIGHTWEIGHT 250 CC CAN-AM 250

GENERAL INSTRUCTIONS AND INDEX

BY COMMAND OF THE DEFENCE COUNCIL

Alvin Whitmore.

Ministry of Defence

INDEX AMENDMENT RECORD

Amdt	Incorporated by	Date	Amdt	Incorporated by	Date
1			3		
2			4		

PREFACE

1 The controlling publication authority for this sub-category is:

Vehicles and Weapons Branch REME
Chobham Lane,
Chertsey, Surrey KT16 OEE

who are the authority for allocation of instruction numbers.

2 All general instructions as issued are to be recorded in manuscript by the recipient on the general instruction index provided. Amendments to individual general instructions are to be recorded on the Instruction Amendment Record. All extant instructions and amendments can be found listed in the main AESP Index.

3 The controlling publication authority is responsible for the preparation and maintenance of the general instruction index and will issue completed and subsequent blank index pages as necessary. Instruction numbers can only be allocated by the controlling authority.

4 Comments on instructions are to be forwarded in accordance with AESP 0100-P-011-013.

GENERAL INSTRUCTION INDEX

This index is to be kept up to date by the User entering general instructions as and when they are published.

Mod No	Pty	Subject	Approval No/ Remarks
1		Jack Stand	TSS/4634
2		AMPERAGE DETECTOR ASSY	70912 (202)
3		CLUTCH PRESSURE PLATE SCREWS	TSS 5345.
4			
5			
6			
7			
8			
9			
0			
1			
2			
3			
4			
5			
6			
7			
8			
9			
0			

MOTOR CYCLE LIGHTWEIGHT 250 CC CAN-AM 250

GENERAL INSTRUCTION NO 1

Sponsor:
 DGE ME (A)

Publications Authority:
 Vehicles & Weapons Branch REME
 Project No: 70812 (124)
 File ref: VB/55706/41

AMENDMENT RECORD

Amdt	Incorporated by	Date	Amdt	Incorporated by	Date
1			4		
2			5		
3			6		

SUBJECT: Jack stand
 (Approval No TSS/4634)

INTRODUCTION

1 This instruction refers to the local manufacture of a jack stand to be used by workshops on the subject vehicles as listed in para 2. The stand facilitates removal of the rear wheel and repair work requiring the rear wheel off the ground by one person without assistance.

APPLICABILITY

2 Motor Cycle, Lightweight, 250 CC CAN-AM MK 2 of the following VAC:
 1010-4100 and 1010-9100.

ESTIMATED TIME REQUIRED

3. Manufacturing: 8 man-hours

IMPLEMENTATION

4 Stores, tools and equipment

4.1 Stores or suitable equivalent to be obtained locally

<u>Item No</u>	<u>COSA Section</u>	<u>NSN/Part No</u>	<u>Designation</u>	<u>Qty per eqpt</u>
1	G2	4710-99-965-0502	Steel tube 25 mm o.d. x 3.2 mm wall thickness	As reqd
2	G2	9515-99-964-7895	Steel strip 25 mm x 5 mm thk	As reqd

<u>Item No</u>	<u>COSA Section</u>	<u>NSN/Part No</u>	<u>Designation</u>	<u>Qty</u>
4.2	<u>Tool to be manufactured</u>			
3	-	V6410/1	Stand, jack	1

Sequence of operations

Note ...

The item numbers of para 4 are used as reference throughout this instruction.

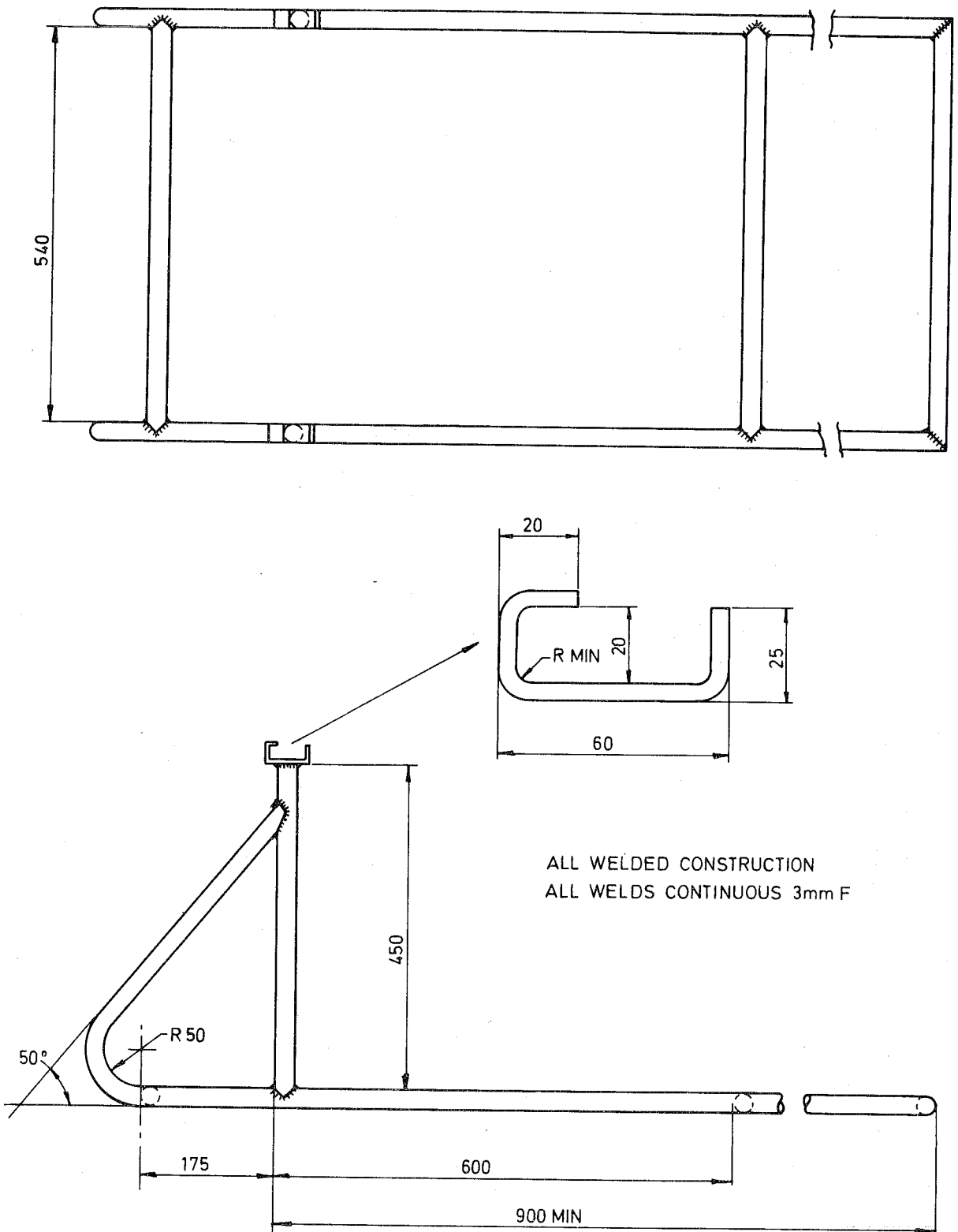
5

5.1 Manufacture stand (item 3) to detail shown in Fig 1 using steel tube (item 1) and steel strip (item 2).

Method of operation

6

6.1 With cycle on centre stand locate lugs of jack stand on to pannier frame, pivot on radiused section, and pull down.



Matl. STEEL TUBE 25od x 3.2 wall
BS1775 CDS24 G2/4710-99-965-0502
STEEL STRIP 25x 5
BS 4360 Gde 43A G2 9515-99-964-7895

V6420/1

Fig 1 - Can-AM MK 2 jack stand
(Dimensions in mm)

MOTOR CYCLE LIGHTWEIGHT 250 CC CAN-AM 250

GENERAL INSTRUCTION NO 2

Sponsor:
DGEME(A)
Data Centre Code BVT7B

Publications Authority:
Vehicles & Weapons Branch REME
Project No: 70912(202)
File ref: VB/55706/44

AMENDMENT RECORD

Amdt	Incorporated by	Date	Amdt	Incorporated by	Date
1			4		
2			5		
3			6		

SUBJECT: Amperage detector assy

INTRODUCTION

1 AESP 2340-K-201-811 Mod Instruction No 2 dated Mar 81 which introduced an improved amperage detector assy to the Mk 1 version of the Can-Am motor cycle has now been cancelled due to non availability of spares.

This instruction details the action to be taken on failure of the detector assy.

APPLICABILITY

2 Motor Cycle, Lightweight, 250 cc Can-Am MK1 of the following VAC: 1010-0746 and 1010-5746 of contract No FVE 22A/36.

IMPLEMENTATION

3 On failure of detector unit, disconnect, remove and discard unit. Tape up end of each detached cable individually.

Note ...

The vehicle will operate satisfactorily without the detector unit and in no circumstances must attempt be made to fit the Can-Am MK 2 detector unit in lieu.

MOTOR CYCLE LIGHTWEIGHT 250CC CAN AM

GENERAL INSTRUCTION NO. 3

SPONSOR:
DGEME(A)

Publications Authority:
Vehicles & Weapons Branch REME
Project No. 70912 (245)
File ref: VB55706/45

AMENDMENT RECORD

Amdt	Incorporated by	Date	Amdt	Incorporated by	Date
1			4		
2			5		
3			6		

SUBJECT: Clutch pressure plate screws
(Approval No. TSS/5345).

INTRODUCTION

1 Instances have occurred where clutch pressure plate screws, (AESP 2340-K-201-711 plate reference A3 item 18 refers) have worked loose causing considerable damage to the clutch assembly. Units are advised that on the next occasion the clutch cover assembly is removed, the screws (item 18) are to be removed, degreased, coated with Loctite 270 or suitable equivalent and refitted.

1.1 Limitations on use of equipment: Nil.

APPLICABILITY

2 Motor Cycle Lightweight 250CC
Can-Am all variants